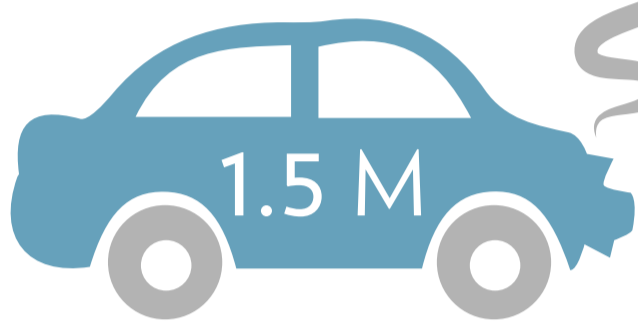


WINTER WEATHER DRIVING BE PREPARED

Each Year

poor weather-related driving
conditions are associated with:



1.5 M

vehicle crashes



fatalities

800,000
injuries



WHEN DO CRASHES OCCUR?



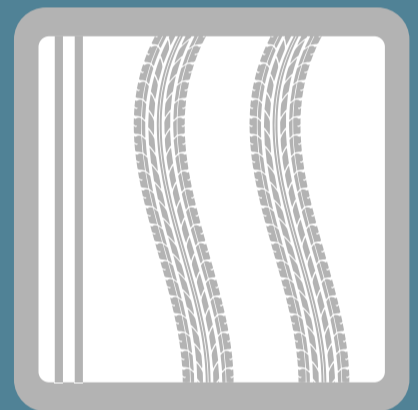
While snowing
or sleeting

15%



Icy pavement

13%



Snow or slushy
pavement

11%

PREPARE YOUR VEHICLE



Check anti-freeze
levels



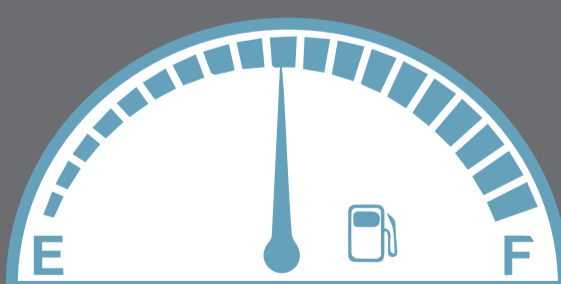
Add de-icer to
windshield solution



Check air pressures
in tires



Carry an
emergency kit



Refill the gas tank
when 1/2 empty



Keep jumper cables
in the car

Created by:



www.vfis.com

Source: ncbinlm.nih.gov :: NSC.org :: usfa.fema.gov :: CDC.gov ::